

# TELECRANE®

## F24 Series Operating Instructions



TELECRANE® Lcc's Hi-Teeh Ent. Co., Ltd.

## Table of Contents

F24 Warranty & precautions of operation.....	1
How to start/Transmitter battery / Receiver power supply .....	3
Changing frequency &Identify frequency quartz.....	4
ID code remote setting .....	5
Receiver power supply selection.....	6
Extra Com of Down relays / Troubleshooting .....	7
F24 Wiring Diagram.....	8



## **Warranty**

Lcc's Hi-Tech Enterprises Co., Ltd. Guarantees that this product meets its published specifications at the time of shipment from the factory. Under proper installation it should work as expected. However, Lcc's Hi-Tech can't guarantee that operation in TELECRANE system is absolutely error-free, or without interruption.

### **Warranty Period**

This equipment is warranted against defects in material and manufacturing for a period of one year from the date of shipment. During the warranty period, TELECRANE is responsible for necessary repairs as long as the product can be proved to be defective.

For warranty service or repair this product must be returned to a service facility designated by TELECRANE. Buyer will pay shipping charges to TELECRANE while TELECRANE will pay return shipping charges.

### **Excluded Items**

This warranty does not include consumptive parts such as batteries, fuses, buttons, relays. Also this warranty does not cover defects caused by improper installation, improper or insufficient maintenance, unauthorized modification, improper operation, ignorance of environmental specifications, or improper software setting.

### **Remarks**

- ©No other warranty is expressed or implied, except for the above mentioned.
- ©The remedies provided herein are the buyer's sole and exclusive remedies. TELECRANE shall not be liable for any direct, indirect, special, incidental or consequential damages.



### **Attention**

- ◎Never dismantle the equipment by any unauthorized personnel, or equipment may be damaged.
- ◎After finishing operation of TELECRANE radio controller shut off main power to the crane, power to receiver, and remove transmitter key. If transmitter's power is controlled by "rotary key switch" then need turn the key to "OFF" position and remove it.
- ◎The crane should be equipped with main power relay, limit switch and other safety devices.

### **Precautions ( I )**

To avoid any interference, the receiver must be placed as far as possible from frequency inverter and power cable as possible.

### **Precaution ( II )**

The receiver should be installed on the top of the electrical control box. Do not mount the receiver inside the electrical control box.

### **Emergency**

In case of Emergency, please follow the procedure below and contact the distributor for service immediately.

1. Press EMS button of transmitter.
2. Remove the key from transmitter.
3. Switch off the main power of crane.
4. Contact distributor nearest you immediately.



### **How to start**

1. Insert 2 AA-size alkaline batteries into battery compartment.
2. Insert rotary key and switch to ON position.
3. Follow the Power-On procedure to energize the main relay inside receiver.
4. Operate normally according to the function settings have been done.
5. After operation, please proceed as following: (1) Press EMS mushroom, (2) Remove the key and keep it in safe place, (3) Switch off the equipment's main power (e.g. Crane)

### **Transmitter Batteries**

The AA size alkaline batteries are required for the transmitter. The LED will flash green when the battery power is sufficient. The LED will flash red when the battery power is low, and it is required to replace with fresh batteries immediately.

### **Receiver Power Supply**

Each transformer provide 3 options voltage for receiver power supply as below

- (1) 48/110/220VAC
- (2) 110/220/380 VAC
- (3) 48/220/380VAC

### **Changing frequency & Identify frequency quartz**

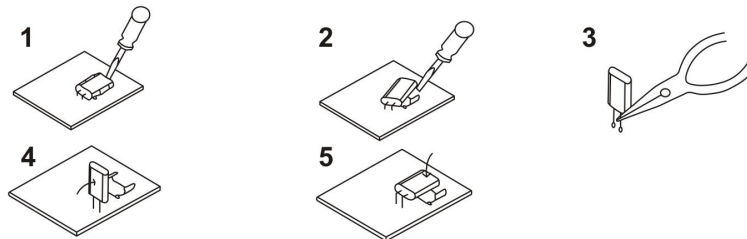
It's easy to change frequency of new F24 series. The frequency can be changed simply by replacing correspondent frequency quartz into both transmitter and receiver.

Note: There are 2 types of frequency are available: VHF and UHF

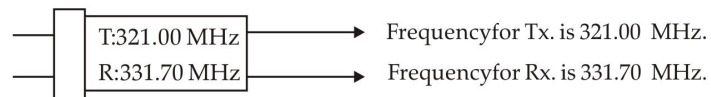
Do not replace the VHF quartz unit into UHF transmitter or receiver. The UHF and VHF frequency band can be found on both transmitter and receiver RF module with a check mark "V".

#### **Instructions:**

- (1) Pry up the existing quartz unit with a flat screwdriver
- (2) Remove the quartz unit from the RF module.
- (3) Straight up both pins of the new quartz unit with pliers.
- (4) Insert new quartz unit vertically into the RF module.
- (5) Press the new quartz down into the socket.



Note: Each quartz unit is containing 2 frequencies based on installing to transmitter or receiver module. The result of quartz frequency will be different when installing on transmitter or receiver RF module.





## **ID Code Remote Setting**

ID Code Remote setting allows you to overwrite receiver ID code by a new one from transmitter. Before making ID code remote setting, make sure both transmitter and receiver are in same frequency channel. Caution: The prior receiver ID code will be permanent overwritten once ID code remote setting is done.

Before ID code remote setting, please follow the instruction below, Make sure both transmitter and receiver are same model and in the same frequency channel.

Receiver JP1 jumper must be installed in order to perform ID code remote setting.

To avoid interference during remote setting, it's best to have transmitter close to receiver as possible.

Receiver power supply must be switch off (MAIN SWITCH) and turn on again after 20 seconds. (ID code remote setting must be completed within 4 minutes after receiver is being turn on again).

### **Instructions:**

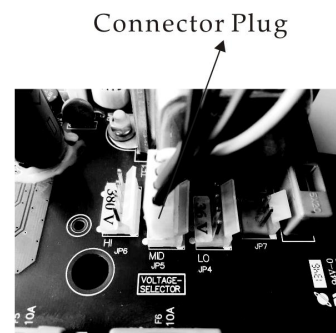
- (1) Turn off receiver power supply completely (MAIN SWITCH) and turn on again after 20 seconds.
- (2) Press transmitter EMS mushroom.
- (3) Press UP pushbutton and hold it (Do not release UP pushbutton until next step is completed).
- (4) Press DOWN pushbutton 4 times and release "EMS mushroom" & "UP pushbuttons" when red LED flash.
- (5) Start the system as usual.

Note: (1) Any other receiver ID code with same model may be overwritten also if located within control distance.

(2) ID code remote setting only transmits ID code data. No any other data will be overwritten.

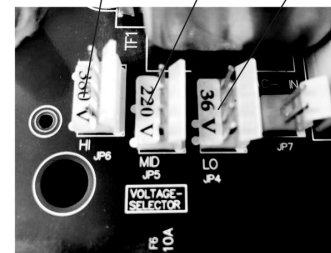
### Changing receiver power supply voltage

1. Disconnect the power of receiver.
2. Remove connector plug of the transformer from its original position (Fig A)
3. Then insert connector plug into the new position (Fig B)



(Fig. A)

380V	220V	110V
220V	110V	48V
380V	220V	48V



(Fig. B)





### **Extra COM of DOWN relays**

Additional COM is available for DOWN relays. The red wire (Jump 1) is backup COM connection for down relays. If additional COM connection is required for the down relays, cut off red wire and connect new COM source for down relays (with longer part of red wire are COM of "DOWN" relays).

### **Troubleshooting**

Symptom	Causes or solution
Red LED lamp flashing quickly (every 0.2 sec) when any pushbutton is being pressed	<ul style="list-style-type: none"><li>■ One of the pushbuttons is jammed.</li><li>■ The EMS mushroom is not released completely.</li><li>■ The transmitter is not properly Power-On according to the instructions.</li></ul> <p>Note: Please contact the distributor nearest you for further assistant if need.</p>
Tx. LED flashes slowly (every 0.5 sec intermittent)	<ul style="list-style-type: none"><li>■ The transmitter memory is damaged.</li></ul> <p>Contact the distributor for service.</p>
Tx. LED remains ON with red light	<ul style="list-style-type: none"><li>■ Please remove the batteries and insert again.</li></ul>
Rx. does not respond at all	<ul style="list-style-type: none"><li>■ Switch off main power and switch on again after 20 seconds.</li></ul>

